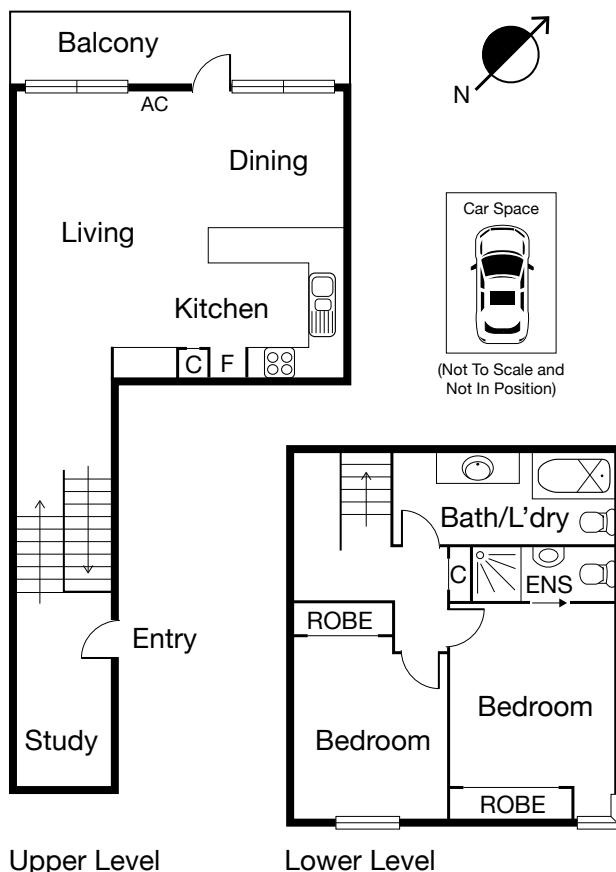


SOUTH MELBOURNE 50B Napier Street



CAYZER

SOUTH MELBOURNE 50B Napier Street



SECURE AND SPACIOUS ON THIRD FLOOR

- Elevated split-level apartment in the City Edge complex
- North facing sun-filled balcony
- Ready for immediate occupation

Entry with study alcove, then step down to appointed spacious kitchen and open plan living and dining with large north facing sun filled balcony.

Lower level leads to two bedrooms (each with built in robes and main with ensuite) and second bathroom incorporating laundry. There is internal storage, split system heating/cooling, and undercover car park. 77sqm internally and 7sqm of balcony (approx.)

Moments from public transport, Botanical Gardens/ St Kilda Road precinct, Clarendon Street, CBD, restaurants and more.

2 2 1

FOR SALE

Inspection As advertised or by appointment

Contact Michael Szulc 0417 122 809
Jordan Gravestein 0448 250 193

Mel Ref 57 J1

GAVL
LIVE AUCTIONS



Interactive Floorplan

CAYZER

Albert Park 330 Montague Street 03 9699 5999
Port Melbourne 370 Bay Street 03 9646 0812

cayzer.com.au

Every care has been taken to ensure the information contained in this document is accurate. The diagrams/plans are a representation only and are not to scale. Interested parties should seek independent legal advice. Cayzer Real Estate Pty Ltd does not accept any responsibility or liability as a result of the information provided in this document. If your property is currently listed for sale with another agent, please disregard this notice. | Cayzer Real Estate Pty Ltd | CRE20401-058 140518